

The **Flying V Trail** system is located 8 miles north of Newcastle, off U.S. Highway 85, and consists of more than 17 miles of single-track trails, as well as wider trails. Look for sign on the right when heading north.

The **Serenity Trail** is located 3 miles north of Newcastle, off of U.S. Highway 85, and consists of 2 loops, either 2 or 4 miles. Look for sign on the right when heading north. (Map on back)

The **Old Quarry Trail** system is new, located 8 miles east of Newcastle, off U.S. Highway 16, consisting of about 5 miles ranging from 40-60" width. Look for large boulders in the parking area on the left after the LAK turnoff.

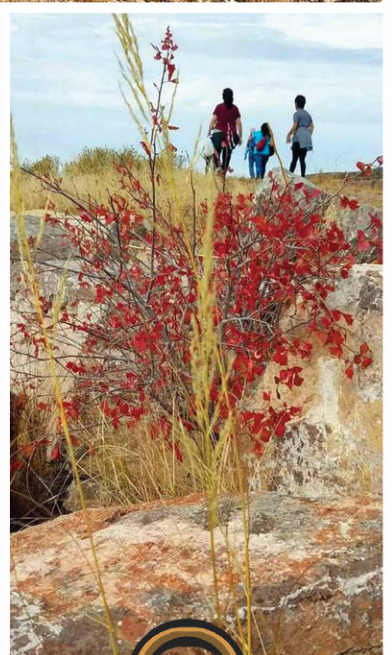
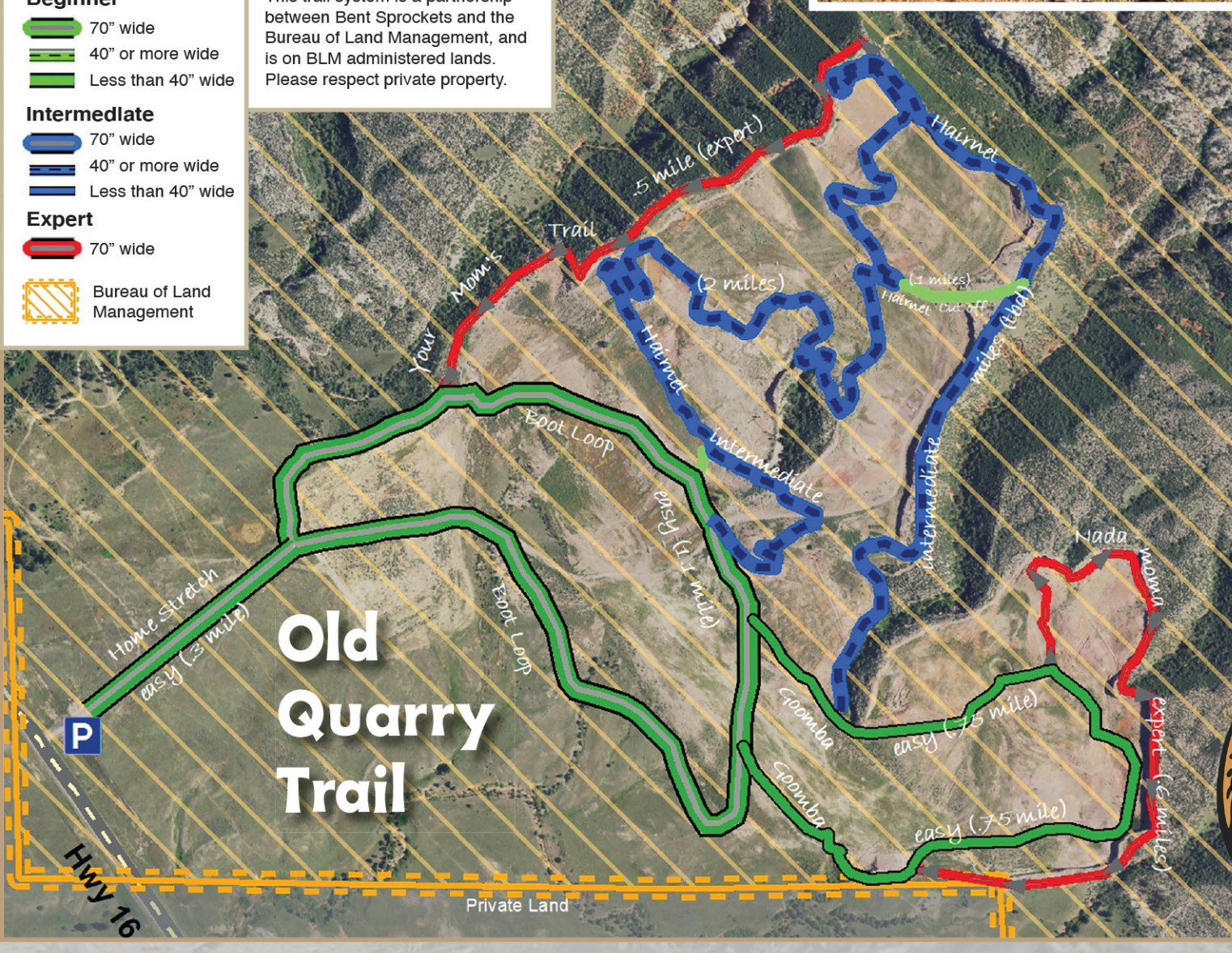
The **Mallo Trail** is a fun trail located just beyond Mallo Camp, about 20 miles north of Newcastle off U.S. Highway 85. Look for the Mallo Camp sign and follow directional signs. (Map on back)



Weston County, WY HIKING/BIKING TRAILS

- Beginner**
- 70" wide
 - 40" or more wide
 - Less than 40" wide
- Intermediate**
- 70" wide
 - 40" or more wide
 - Less than 40" wide
- Expert**
- 70" wide
- Bureau of Land Management

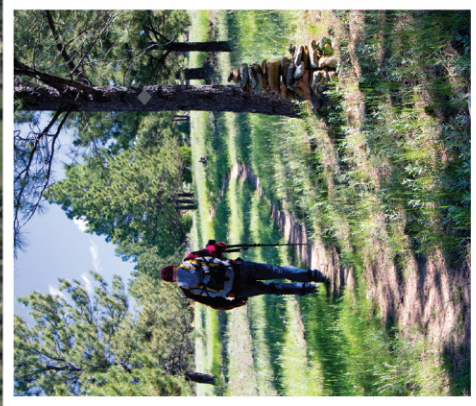
This trail system is a partnership between Bent Sprockets and the Bureau of Land Management, and is on BLM administered lands. Please respect private property.



Serenity Trail



-  2 Mile Loop
-  4 Mile Loop




Maps courtesy of Bent Sprockets
#bentsprocketswy



Newcastle's Community
INSPIRED Bank
NEWCASTLE'S ONLY
DRIVE-UP ATM
1401 Washington Blvd.,
Newcastle WY 82701
307-746-4466



Pinnacle Bank
MEMBER FDIC

GET YOUR HIKE ON!

WESTON COUNTY HEALTH SERVICES
1124 WASHINGTON BLVD. NEWCASTLE WY 82701
WCHS.WY.ORG • HOSPITAL 746-4481
MANOR THERAPY SERVICES • HOME HEALTH PHARMACY • UPTON CLINIC • NEWCASTLE CLINIC

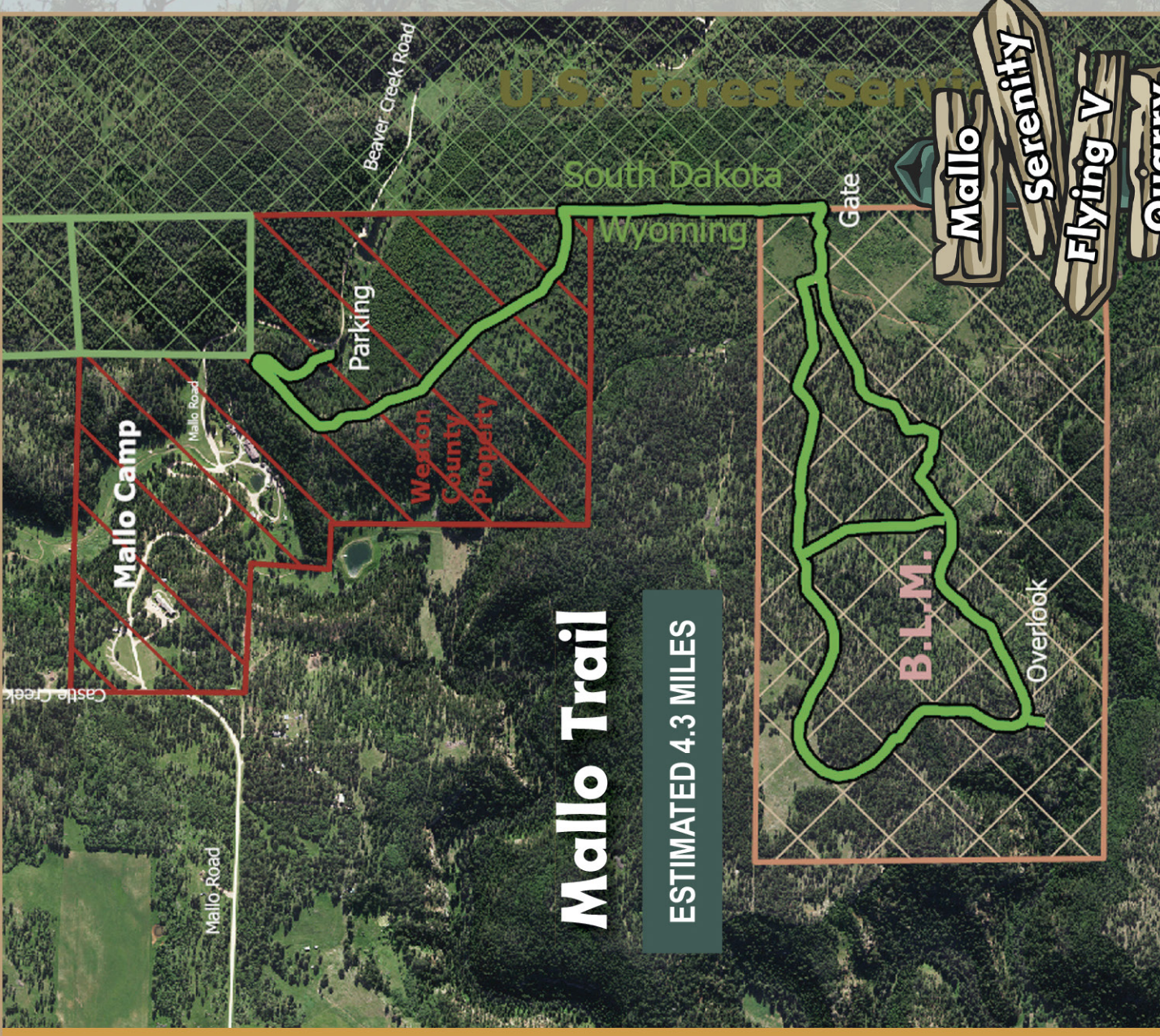
PROMOTING HEALTHY LIFESTYLES

DECKER'S M·A·R·K·E·T

*Everything you need
all in one convenient location!*

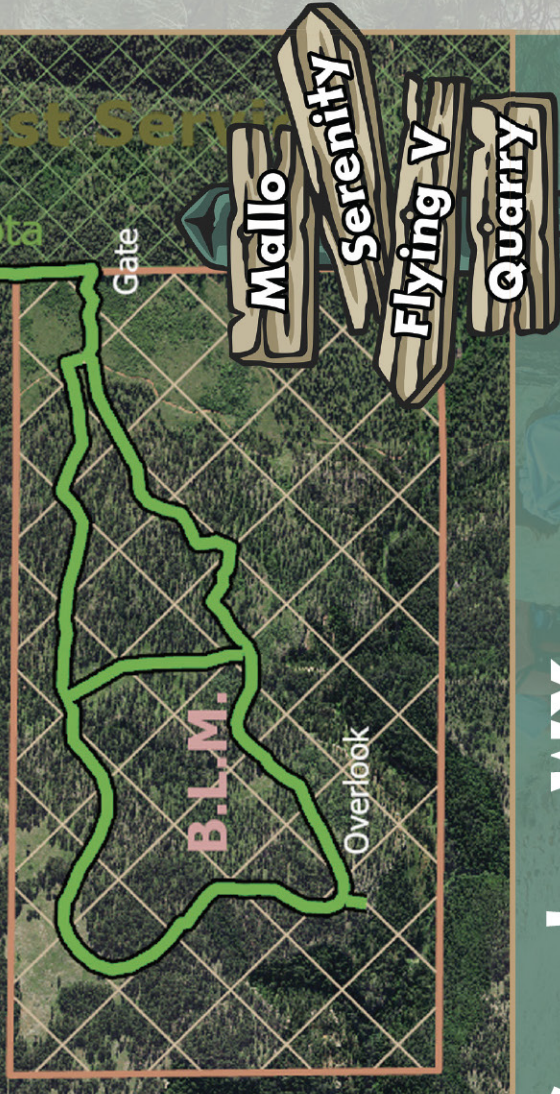
BAKERY • DELI • COLD DRINKS • ICE
701 Washington Blvd • Newcastle, WY
307-746-2779 • deckersmarket.com

* No motorized vehicles permitted on these trails, with the exception of adaptive users.



Mallo Trail

ESTIMATED 4.3 MILES



Weston County, WY HIKING/BIKING TRAILS



Weston County has more than 130 miles of trails to explore!
Look for interpretive signs at trail heads and along trail routes. Individual trail brochures can be found at Weston County Museum and Weston County Library, as well as other local businesses.